



Digital technology improves life

# UP560

True Color Texture Rpd Design Expert

**UP3D Scanner**

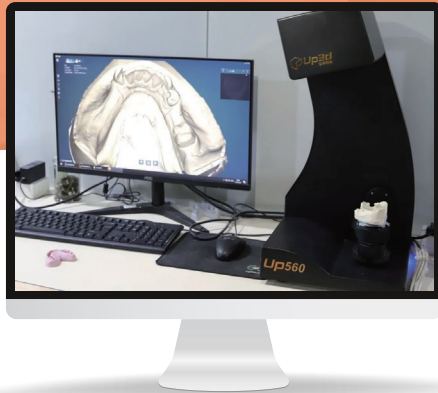
2X3MP HFR cameras



## Texture Expert To Simplify The Rpd Process

### Provide One-stop Solution For Digitalization Of Rpd

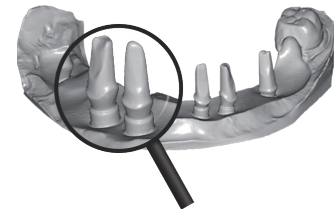
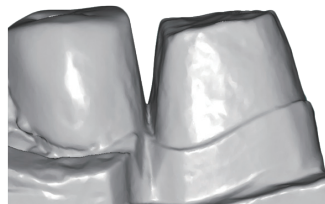
No need to follow the traditional process step by step, all processes are left to the software within the computer, reducing manual errors and rework rates, maximize productivity and facilitate digital transformation.



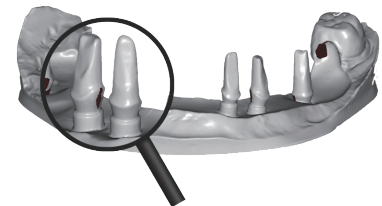
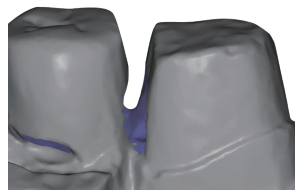
### Upgraded Unsectioned Model Scanning Result for 360° Without Blind Angle Scanning

Brand-new appearance, faster scanning speed, higher precision, more comprehensive scanning with the same cameras

UP560



Traditional scanner





01 one-click to scan double-sided impression



02 Mark the margin line



03 Total solution for post & core scanning



04 Virtual articulator transfer



## Open System

Support PLY format , 3shape, exocad import directly



## True Color Texture Scan

For RPD design



## Full Arch Implant Scan In One Time

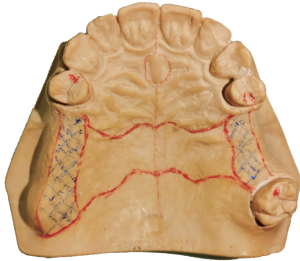
No need to unscrew the abutment, significantly improving the scanning efficiency of the implant restoration



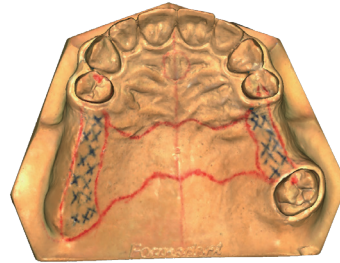
## True Color Texture, Rpd Expert Highly Restore

## The Real Color Of The Model To Help The Rpd Design

UP560 achieves new upgrade based on UP360 series, with dual 3 megapixels cameras (high frame rate), realizes faster and clearer capture image, and provides more efficient and accurate data for the digital dental industry.



Color texture model



UP560 scan data

### YOUR SATISFACTION IS OUR PURSUIT

All products are tested inhouse by professional QC team before delivery

### Professional Technical Support

24-hour online technical support and service to meet your needs

### WARRANTY PERIOD

One year for hardware,everlasting for software

### AFTER-SALES GUARANTEE

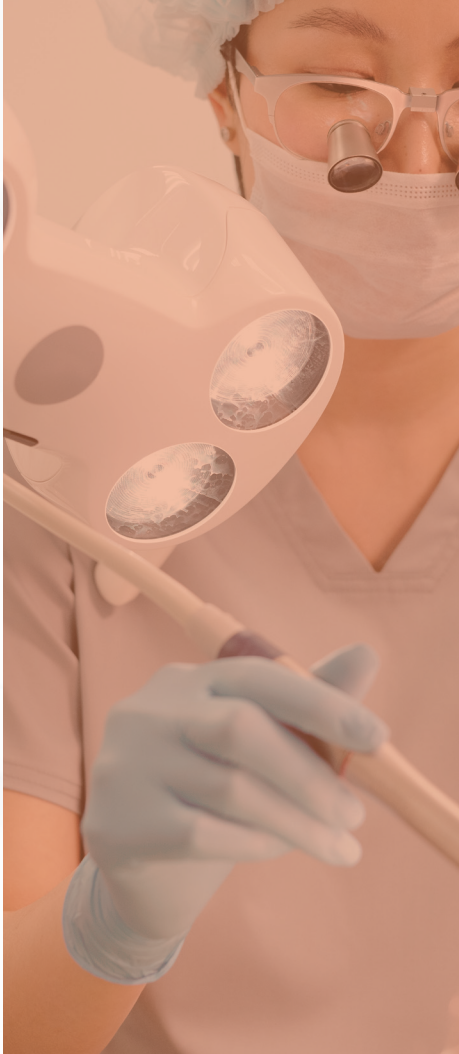
No annual fee for software,and professional technical team do the excellent service

# Parameters

## UP3D Scanner



Model	UP560
Size	305*310*550mm
Weight	10kg
Cameras	2*3.0mp
Accuracy	6 microns
Projector	Customized blue-light / Multi-color scanning
Interface	USB 3.0
Output Formats	STL, UM, PLY, OBJ
Power Supply	AC 110-220V, 50Hz
Product Features	All-in-one scan, One click scanning triple tray Detect margin line, Texture scan
Scan Speed	Full arch: 12s All-in-one: 11s Triple tray: 101s



UP3D is a high tech company and the few companies in the world that are capable of developing a full dental CAD/CAM solution including software and hardware, from scanning, designing, to milling.

UP3D remains dedicated to our customers' requirements for training and support as well as for innovative, high-quality products that perform reliably. We have native technical support to deal with any after-sales problems to ensure that you can use our products happily.

## CONTACT US

 [www.up3ds.com](http://www.up3ds.com)

 [info@up3d.cn](mailto:info@up3d.cn)

 +86-755-26983202

